

DESIGN GUIDE²⁰₂₄



SMART
CABINETS[®]

TABLE OF CONTENTS





DOOR STYLES

STANDARD OVERLAY	4
MODIFIED FULL OVERLAY	6
FULL OVERLAY	8
CONTEMPORARY STYLES	12

FINISHES

MAPLE	10
PAINTED	11
OAK	10
THERMOFOIL	11
THERMOFUSED LAMINATE	11
EDGE PROFILES	10

CONSTRUCTION

WALL CABINETS	14
TALL CABINETS	14
BASE CABINETS	15
VANITY CABINETS	15
UNIVERSAL ACCESS CABINETS	16

CABINET FEATURES

STANDARD	18
UPGRADE	18
ALL PLYWOOD	19
MAX / ULTIMATE	19

STANDARD OVERLAY

1" Reveal on All Sides

BRIGHTON



M|P Americano

DOVER



O Natural

CORDELE



O Graphite

EDGEWOOD



O Spice

HUDSON



O Fawn

LEXINGTON



M|P Honey

NEWARK



O Silvergrass

PORTAGE



M|P Coffee

ROCKPORT



M|P Stone

SEDALIA



M|P Umber

SHEFFIELD



M|P Pecan

SQUIRE



M|P Carmel

CHATEAU

Price Group 3



M|P

Natural

PACIFIC

Price Group 3



M|P

Chestnut

CAROLINA

Price Group 4



M|P

Slate

OXFORD

Price Group 4

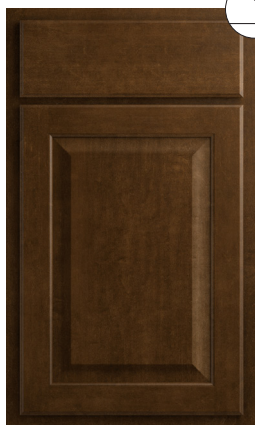


O

Coffee

PRESCOTT

Price Group 4



M|P

Americano



SQUIRE | MAPLE | STANDARD OVERLAY | PAINTED IN ELEGANT WHITE



MODIFIED FULL OVERLAY

1/4" Reveal on Left & Right and 1" Reveal on Top & Bottom





LOUISVILLE | MAPLE | FULL OVERLAY | IN SAHARA & UMBER



FULL OVERLAY

1/4" Reveal on All Sides

BOYDTON

Price Group 2

M|P

Fawn

BELMONT

Price Group 3

M|P

Root Beer

CASCADE

Price Group 3

L

Silvergrass

CHELSEA

Price Group 3

P

Nautical Blue

CLIFTON

Price Group 3

O

Pecan

LANSING

Price Group 3

M|P

Graphite

LOUISVILLE

Price Group 3

M|P

Fawn

MASON

Price Group 3

M

Pecan

NORTHPORT

Price Group 3

T|TT

Slate

NORWOOD

Price Group 3

O

Natural

SUMMIT

Price Group 3

M|P

Willow

SWEDONA

Price Group 3

M|P

Umber

TAHOE

Price Group 3



P Elegant White

BERKSHIRE

Price Group 4



M|P Iron

DENVER

Price Group 4



T Matte Black

VALDEZ

Price Group 4



T Harbor Gray

WILMONT

Price Group 4



M Carmel



SWEDONA | MAPLE | FULL OVERLAY | STAINED IN FAWN



FINISHES

Printed colors are for representation only. Order samples for accurate color matching.

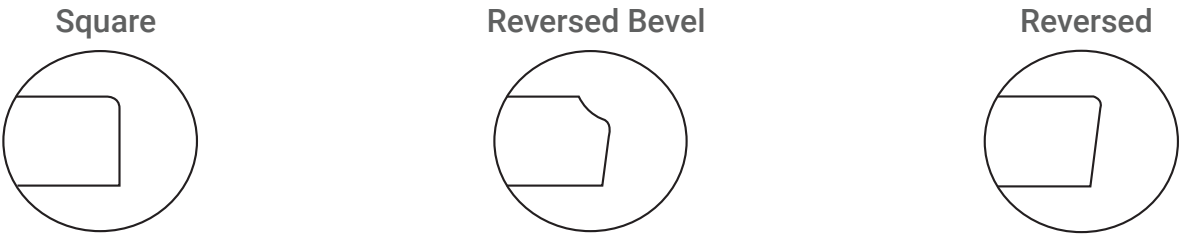
MAPLE FINISH OPTIONS | M

Natural	Ginger	Honey	Silvergrass	Fawn	Umber
					
Pecan	Americano	Carmel	Chestnut	Slate	Root Beer
					
Graphite	Coffee				
					


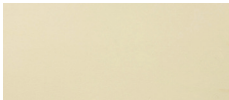

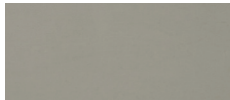
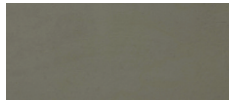
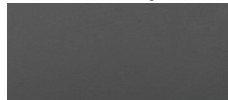


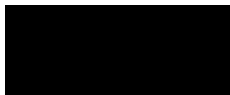
OAK FINISH OPTIONS | O

Natural	Silvergrass	Fawn	Spice	Pecan	Slate
					
Graphite	Coffee				
					








EDGE PROFILES



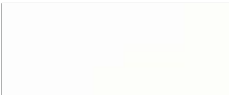



PAINT FINISH OPTIONS | P

Elegant White	Buttercream	Sahara	Stone	Willow	Harbor Gray
					
Iron	Nautical Blue	Piano Black	<i>Maple doors in a painted finish option will be made with a high-density fiber board (HDF) with the exception of Carolina, Belmont, Berkshire, and Pacific.</i>		
					

THERMOFOIL FINISH OPTIONS | T | TT

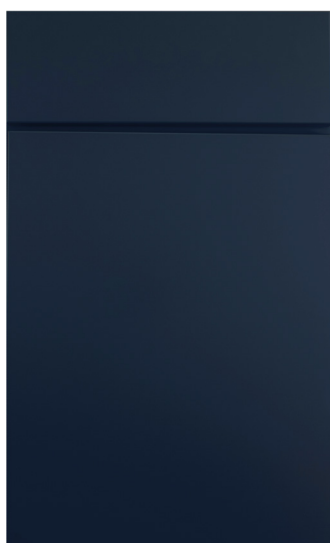
Elegant White	Stone	Harbor Gray	Matte Black
			
Elegant White	Slate	Coffee	<i>Thermofoil with Textured option are marked with "TT"</i>
 TEXTURED	 TEXTURED	 TEXTURED	

THERMOFUSED LAMINATE FINISH OPTIONS | L

Elegant White	Buttercream	Silvergrass	Graphite
	 TEXTURED	 TEXTURED	 TEXTURED

CONTEMPORARY STYLES





CONSTRUCTION

WALL CABINETS

BACK | ½" Woodgrain laminate rabbeted into ends, wood glued & stapled on top & bottom.

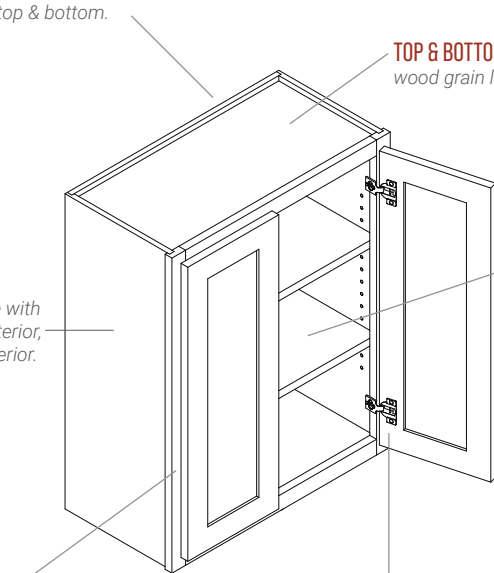
TOP & BOTTOMS | ½" Substrate with light maple wood grain laminate interior & exterior.

END PANELS | ½" Substrate with light maple wood grain interior, designated laminate exterior.

ADJUSTABLE SHELVES | ¾" Thick edgebanded particle board shelves are attached with locking shelf clips.

FRAMES | ¾" Thick & 1½" wide kiln-dried hardwood, assembled under pressure with screws. Offers maximum strength & squareness.

HINGES | 108° 6-way adjustable, self-closing concealed hinges.



TALL CABINETS

BACK | ½" Woodgrain laminate rabbeted into ends, wood glued & stapled to top & bottom.

TOPS | ½" Substrate with light maple wood grain interior & exterior.

END PANELS | ½" Substrate with light maple wood grain interior, designated laminate exterior.

HINGES | 108° 6-way adjustable, self-closing concealed hinges.

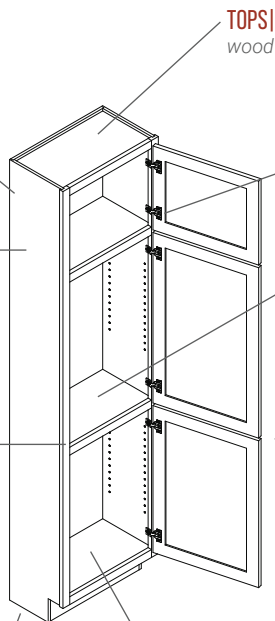
FRAMES | ¾" Thick & 1½" wide kiln-dried hardwood, assembled under pressure with screws. Offers maximum strength & squareness.

SHELVES | ½" Thick fixed wood grain laminate shelves are included. Adjustable shelves must be ordered separately.

Matches base cabinet door height. (28")

TOE KICKS | 4½" Toe kicks with 3½" inset on all standard base cabinets. 93" & 96" toe detached.

FLOORS | ½" Wood grain laminate encapsulated in dado; glued all sides with industrial grade hot melt glue.



BASE CABINETS

BACK | ½" Woodgrain laminate rabbeted into ends, glued top & bottom with industrial grade hot melt glue.

BRACES | Full depth braces provide I-beam stability & convenient anchor points for counter tops.

DRAWER GUIDES | Features captive roller, (75lb) epoxy-coated stay closed side guides.

END PANELS | ½" Substrate with light maple wood grain interior, designated laminate exterior.

DRAWERS | ⅝" Solid dovetail drawers, featuring four-sided construction & captive ¼" matching laminate bottom.

ADJUSTABLE SHELVES | ¾" Thick, edgebanded particle board shelves.

HINGES | 108° 6-way adjustable, self-closing concealed hinges.

FRAMES | ¾" Thick and 1½" wide kiln-dried hardwood, assembled under pressure with screws. Offers maximum strength & squareness.

FLOORS | ½" Wood grain laminate encapsulated in dado; glued all sides with industrial grade hot melt glue.

TOE KICKS | 1½" Toe Kicks with ¾" inset on all standard base cabinets.

VANITY CABINETS

BACK | ½" Woodgrain laminate rabbeted into ends, glued top & bottom with industrial hot met glue.

BRACES | Full depth braces provide I-beam stability & convenient anchor points for counter tops.

DRAWER GUIDES | Features captive roller, (75lb) epoxy-coated stay-closed side guides.

DRAWERS | ⅝" Solid dovetail drawers, four-sided construction & captive ¼" matching laminate bottom.

END PANELS | ½" Substrate with light maple wood grain interior, designated laminate exterior.

HINGES | 108° 6-way adjustable, self-closing concealed hinges.

TOE KICKS | 4½" Toe Kicks with ¾" inset on all standard base cabinets.

FLOORS | ½" Wood grain laminate encapsulated in dado; glued all sides with industrial grade hot melt glue.



CONSTRUCTION

UNIVERSAL ACCESS CABINETS

BACK | ½" Woodgrain laminate rabbeted into ends, glued top & bottom with industrial hot met glue. 32½" height.

DRAWER GUIDES | Features captive roller, (75lb) epoxy-coated stay-closed side guides.

END PANELS | ½" Substrate with light maple wood grain interior, designated laminate exterior.

FRAMES | ¾" Thick & 1½" wide kiln-dried hardwood, assembled under pressure with screws. Offers maximum strength & squareness.

TOE KICKS | 4½" Toe Kicks with 3½" inset on all ANSI/ADA compliant cabinets. Also available with 9".

BRACES | Full depth braces provide I-beam stability & convenient anchor points for counter tops.

DRAWERS | ⅝" Solid dovetail drawers, featuring four-sided construction & captive ¼" matching laminate bottom.

ADJUSTABLE SHELVES | ¾" Thick, edgebanded particle board shelves.

HINGES | 108° 6-way adjustable, self-closing concealed hinges.

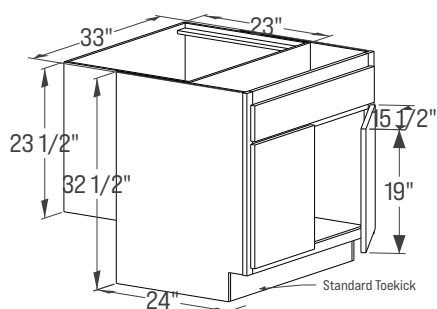
FLOORS | ½" Wood grain laminate encapsulated in dado; glued all sides with industrial hot melt glue.

Smart Cabinetry has a large selection of cabinets available to meet ANSI/ADA and UFAS guidelines.

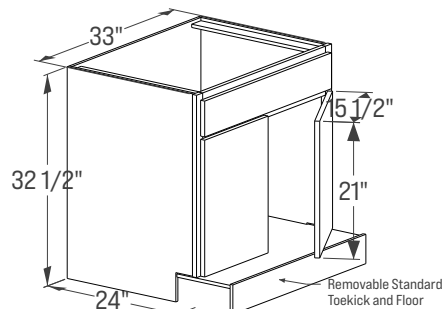
Universal Access modification of 32½" height with 4½" or 9" toe kick available on most base and vanity cabinets. See page 75 in the 2024 Specification Guide to learn how to order.

For Universal Access specific cabinets, please review page 52 in the 2024 Specification Guide.

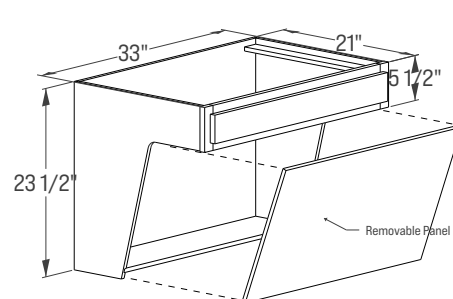
Removable Front



Removable Floor



Wall Hung





CABINET FEATURES

STANDARD FEATURES



1/2" Nominal (12mm) particleboard with light maple laminate interior and designated laminated exterior.



5/8" Solid Dovetail Drawers feature four sided construction and captive 1/4" Nominal (6.4 mm) matching laminate bottom. Includes Epoxy Coated drawer slides (75 lb Dynamic)



6-way adjustable hinges are heavy duty, self closing, and concealed within the cabinet door and frame.



1/2" Nominal (12mm) particleboard with light maple laminate interior and designated laminated exterior.



3/4" Nominal (18 mm) Edge Banded Shelves provide both a matching appearance with the interior of the cabinet, and improved water resistance.

UPGRADE FEATURES



5-Piece Drawer Front



Full Extension Drawer Slides (100 lb Dynamic)



Undermount Soft Close Drawer Slides (100 lb Dynamic)



Soft Close 6-way Adjustable Hinges

ALL PLYWOOD FEATURES



1/2" Nominal (12 mm) plywood with light maple laminate interior and designated laminated exterior.



I-Beam Construction Rails are 1/2" Nominal (12 mm) plywood. Rails are hot melt glued into face frame, sides, and cabinet back.



5/8" Solid Dovetail Drawers feature four sided construction and captive 1/4" Nominal (6.4 mm) matching plywood bottom. Includes Epoxy Coated drawer slides (75 lb Dynamic)



3/4" Nominal (18 mm) Edge Banded Plywood Shelves provide both a matching appearance with the interior of the cabinet, and improved water resistance.



6-way adjustable hinges are heavy duty, self closing, and concealed within the cabinet door and frame.

MAX & ULTIMATE FEATURES*



Max Construction features a 3/4" ACQ pressure treated solid lumber toe kick.



Ultimate Construction features a 2"x6" ACQ pressure treated solid lumber base perimeter touching the floor. (Must order skins for end cabinets)

*Max and Ultimate Constructions both have the same All Plywood Features shown to the left





©2024 CABINETWORKS GROUP MICHIGAN, LLC. ALL RIGHTS RESERVED.
©2024 SMART CABINETRY

SMARTCABINETRY.COM
70680 CR-23 NEW PARIS, IN 46553

