

KraftMaid VANTAGE®



BATHROOM GUIDEBOOK
2022

Designed for “me” time.

Whether you're creating a spa-like master bath retreat or just updating a powder room, KraftMaid Cabinetry can help you make a space that's both a pleasure to use and one that you're proud to show off. In this guide, we'll help you think through your project and highlight your options, so you're ready to talk to a KraftMaid bath designer about your plan.



CABINETS: Garrison | Cherry | Baltic ●



Table of Contents

- Why KraftMaid®
- Before you get started
- Console vanities
- Decorative Accent Collections
- Wall hung vanities
- Vanity sink bases
- Finish options
- Door styles
- Storage
- Details
- What's next?



Why KraftMaid®

Skilled craftsmen build your cabinets with pride and hands-on attention. Plus, we include a host of standard features designed to stand up to real life and last for a lifetime. It's this commitment to excellence that makes KraftMaid the number one name in cabinetry.





From artisans who have spent years perfecting their specialty finishing techniques to inspectors who carefully examine your cabinets at every step of the assembly, you can count on KraftMaid Cabinetry to deliver consistency, craftsmanship and quality.



Our cabinets come with standard features, including solid-wood dovetail drawers, 90-lb full-extension drawer slides and 3/4" solid-wood frames. Then, we test them beyond industry standards to ensure durability.

[!\[\]\(d66ff64371a51729ac8c1cdaa685ba6f_img.jpg\) See how KraftMaid® cabinets get made.](#)

KraftMaid®
LIFETIME
LIMITED
WARRANTY

KraftMaid Cabinetry warrants that its cabinets are free of defects in material or workmanship for as long as you own them.

[!\[\]\(17413706fd4997a1a4bdf85c6864eee1_img.jpg\) Read our Lifetime Limited Warranty in its entirety.](#)

Let's get to work on square one.

Thinking through just a few things before you get started sets the direction for your bathroom design. Then, your KraftMaid bath designer will create a plan that checks all the boxes.



CABINETS: Shepparton | Cherry | Cannon Grey ●

What to consider:

Why it matters:

Which bath are you remodeling? The master bath, family bath or a powder room?

Knowing who will use the space helps define the storage, accessibility and design needs that your plan should address.

How will your vanity be installed?

Vanity cabinets can be freestanding (exposed ends), installed in a corner (single exposed end) or designed to span a space from one wall to another (enclosed ends).

How many sinks do you want?

Dual sinks help couples avoid those “whiskers in the sink” arguments or let two kids get ready for school at the same time. But this arrangement requires a vanity at least 60" wide. Or room for two separate vanity cabinets.

What kind of countertops will you have?

Between natural stone, solid surface, tile and laminate, you can get any look you want. Each has cost and maintenance tradeoffs. And some options may limit your choice of sink (drop-in, undermount, vessel, etc.).

What finishing touches would you like?

Cabinet hardware, crown molding and light fixtures make a big difference, especially in a smaller space like a bathroom. Consider these early in your plan.



CABINETS: Putnam | Cherry | Husk ●

Console Vanities: The look of furniture for your bathroom.

With decorative legs and open storage that reveals the flooring below, console vanities add character without crowding the room – making them perfect for small powder rooms, a Jack and Jill shared bath or a master bath with a his-and-hers arrangement.



Make it your style:

- Choose from five leg options
- Pair with your choice of door style and finish
- Select from single door and double door cabinet configurations

CABINETS: Putnam | EverCore | Dove White ●



Classic Leg



Plain Square Post



Roman Spindle



Tapered Leg



Sterling Leg

Wall Hung Vanities: One part glamour. Equal part practicality.

Also called floating vanities, wall hung vanities don't extend down to the floor like conventional cabinetry. This mounting style exposes more flooring, which gives the room the illusion of more space. (Not to mention, there's one less obstacle to mop around.) You'll commonly see wall hung vanities in contemporary designs.



Make it your style:

- Pair with your choice of door style and finish
- Select from options with doors, drawers or door/drawer combinations
- Mount your vanity at the perfect level for you – you're not restricted to standard cabinet heights
- Add undercabinet lighting for drama and safer middle-of-the-night trips to the bathroom

CABINETS: Lyndale | Maple | Onyx ●



CABINETS: Lyndale | Rustic Alder | Shortbread ●

Vanity Sink Bases: Make it what you want.

What's your dream: a total bath oasis? A better place to sit and primp? Storage, storage, storage? With a wide array of vanity sink bases and linen cabinets, you can customize KraftMaid cabinetry to fit any space, any desire and any style. Your KraftMaid bath designer will help you personalize your plan.

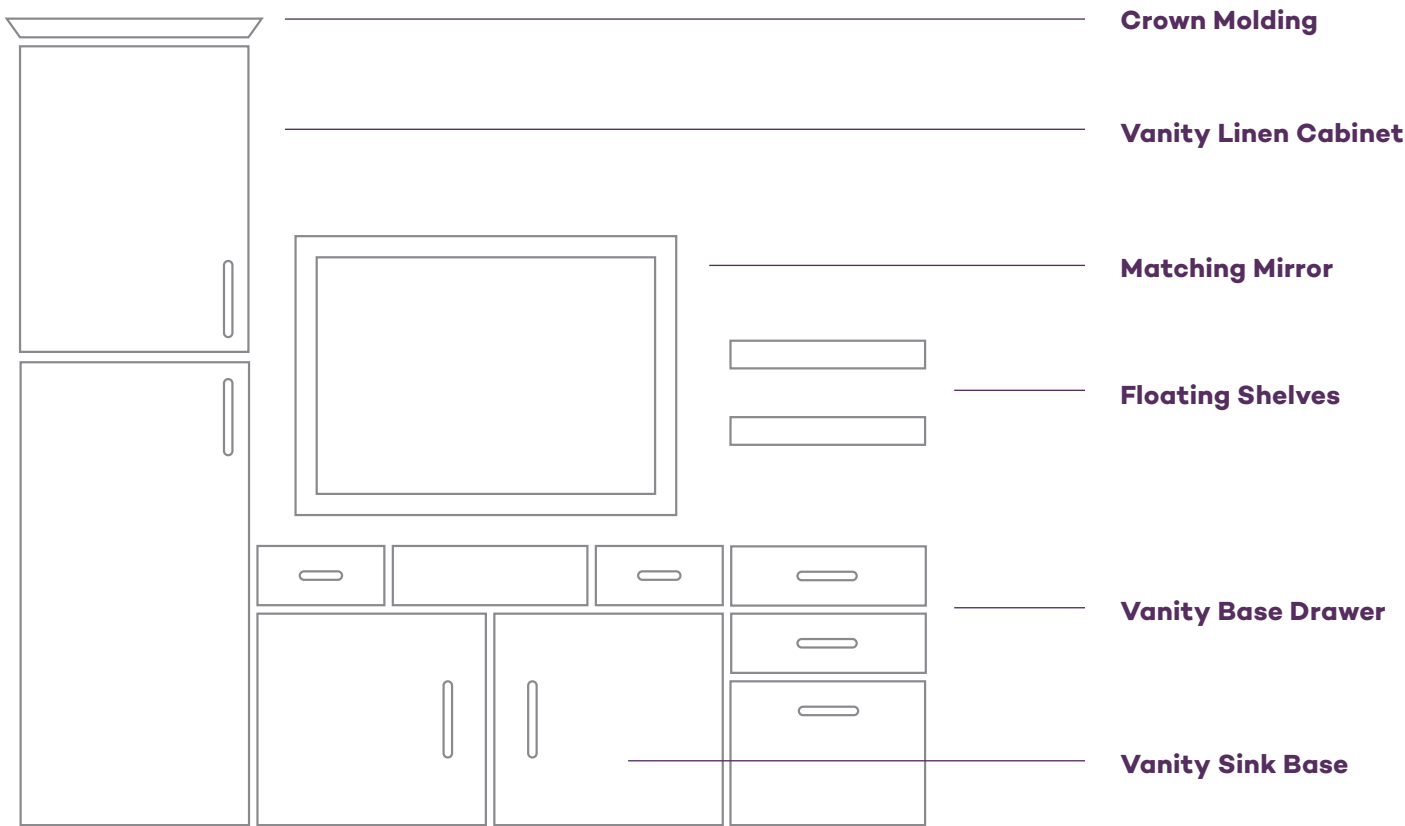


Make it your style:

- Select any door style, any wood type and any finish
- Start with the vanity and add additional base cabinets and linen cabinets as desired
- Carry through the look with mirrors, floating shelves and crown molding finished to match your cabinets

CABINETS: Lyndale | Maple | Onyx ●

Build out your design with options including:



CABINETS: Avery | Maple | Pebble Grey ●



CABINETS: Putnam | EverCore | Dove White ●



VANITY: Charlott | Maple | Canvas with Onyx Highlight ● CLOSET: Charlott | Maple | Canvas ●



CABINETS: Avery | Maple | Peppercorn ●



CABINETS: Garrison | Cherry | Baltic ●

Let's talk color.

The finish you select for your vanity makes a style statement. Go clean and white or add a pop of color with paint. Bring out the beauty of wood with a rich stain. Or choose a foil or specialty finish for a look that's a little more unique.

➤ See 50+ finish options at kraftmaid.com/beauty



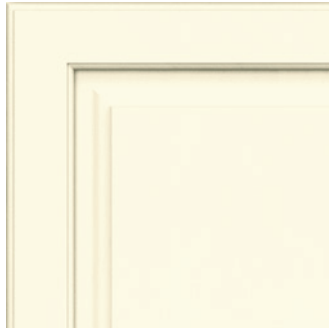
Popular Paints

CABINETS: Lyndale | Maple | Midnight ●

Dove White



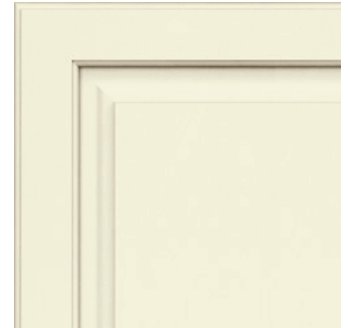
Warm White



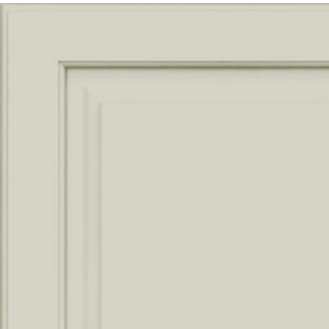
Cottage



Canvas



Moonshine



Pebble Grey



Rainfall



Lagoon



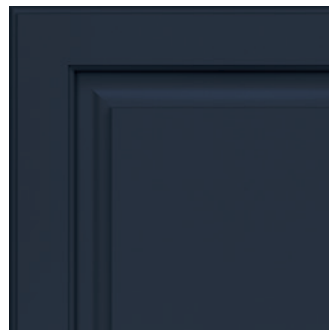
Greyloft



Harbor



Midnight



Popular Stains

Husk



Praline



Peppercorn



Barley



Ginger



Kaffé



Baltic



Molasses



Saddle

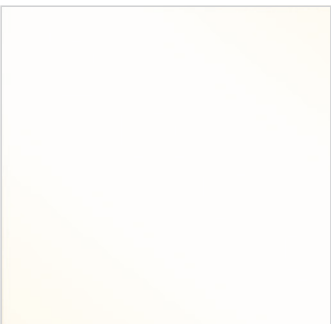


Cannon Grey



Foil

Dove White



Specialty Finish

Translucent Limestone



Set the tone for your space.

We have dozens of door styles, each with unique characteristics that can contribute to the overall vibe of your bathroom design. Here, we've shown a few trending styles and perennial favorites to get you inspired. Your KraftMaid bath designer can show you all your options and help you find the perfect one for you.

➤ **There's much more to explore at kraftmaid.com/looks.**



CABINETS: Lyndale | Rustic Alder | Shortbread ●



Lyndale

Versatile. Classic. Clean-lined. What's not to love about this quintessential Shaker style?



Marquette

An ogee profile gives the raised center panel of Marquette a handsome, time-honored appearance.



Avery

This solid slab door is as streamlined and contemporary as you can get.



Durango

The wider frame pairs with a wide reveal on the beveled center panel to update a classic.



Putnam

A wider frame and a solid wood center panel amp up the luxury in this Shaker-inspired door.



Brookfield

A beaded panel door looks great in a cottage or coastal setting. Glazes or highlights can accentuate the narrow grooves.

Enhance your bath's inner beauty.

From toothbrushes to toilet paper, you pack a lot in your bath. Stay organized with clever storage solutions designed to keep what you need handy and everything else in its place. Talk to a KraftMaid bath designer about customizing your vanity with storage products like these.



U-Shaped Roll-Out Tray



Stainless Steel Tilt-Out Tray



Top-Mount Hamper



Pull-Out Appliance Organizer



Adjustable Drawer Dividers



Wood Tiered Drawer Storage



Drawer Divider



Base Pullout

The finishing touches.

A mirror is a must in a bathroom. So why not make it match the style of the room? Don't stop there. Add crown molding and floating shelves finished to match your vanity. Find hardware that dresses up every door and drawer. Your KraftMaid bath designer can show you all the ways you can personalize your bath with decorative enhancements.



CABINETS: Sedona | Maple | Kaffé ●



Aluminum Frame Doors



Hardware



Base Columns & Furniture Panels



Crown Molding

Get going.

Now that you've thought through the basics of your bathroom and explored your options, it's time to make an appointment to sit down with a KraftMaid bath designer to start a plan for your project.

Find a local bath designer at kraftmaid.com/appointment.

Before you go:

- ☐ **1. Draw a sketch of your bathroom, noting locations of your toilet, sink, bathtub and doors. Add dimensions of the room, measured in inches.**

- ☐ **2. Bring a few pictures of the space.**

- ☐ **3. Collect images of rooms that inspire you.**

- ☐ **4. Be prepared to talk about your budget and desired project timeline.**



GET IN TOUCH WITH A
KITCHEN DESIGNER

Before you know it, you'll be enjoying the KraftMaid® bath you've always imagined. One created just for you and the way you live.



CABINETS: Putnam | Cherry | Husk ●

WHAT'S NEXT?



KraftMaid
VANTAGE®

© 2022 Cabinetworks Group Michigan, LLC. All Rights Reserved.

Specifications subject to change without notice.

The photography and color samples shown in this book have been reproduced as accurately as printing technologies permit and are for representation only. To ensure the highest satisfaction, we strongly recommend you view an actual product sample prior to ordering cabinetry.

kraftmaid.com/dealer

KM-TMBGB1022